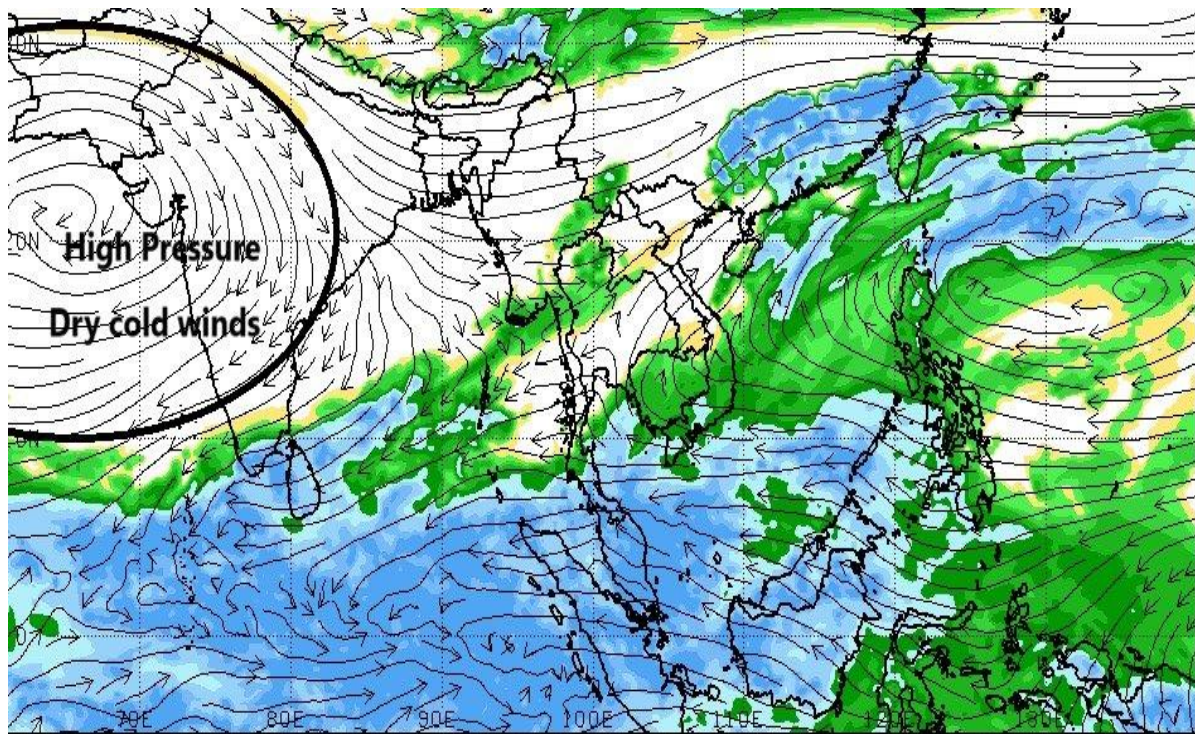




PREPAREDNESS FOR ADVERSED WEATHER CONDITIONS

(26ST NOVEMBER 2024- 28TH NOVEMBER 2024)



NOAA GFS 20241117 t00zCYC FCST 500mb RH (in%) and Streamlines VALID 20241120/1200V084



**DEPUTY CHIEF SECRETARY-ENGINEERING SERVICES
CHIEF SECRETARY'S SECRETARIAT
NORTHERN PROVINCE**

24 Nov. 2024

Weather Synopsis

Current Situation (Monday, 25 November 2024):

- A **depression** is active near the northern parts of Sri Lanka in the **Bay of Bengal**, as indicated in the satellite imagery.
- Massive cloud buildup is observed to the north and northwest of the depression, signifying heavy rainfall potential in the area.
- Mean Sea Level Pressure (MSLP) is around **1004 hPa**, indicating moderate organization of the system.

Key Weather Influences:

1. **High Pressure System to the Northwest:**
 - Dry, cold winds from the north are being pulled toward the depression, increasing the likelihood of **heavy rainfall** due to moisture convergence over Sri Lanka.
2. **Steering Ridge:**
 - A ridge extending to the northwest of the system is steering it **westward** toward the **Southwest Bay of Bengal**.
 - The system is expected to interact with land over northern Sri Lanka, which might limit further intensification.
3. **Precipitation Models:**
 - ECMWF predicts **widespread heavy rainfall** over **northern, northwestern, and northeastern Sri Lanka** from **25 November through 27 November**.
 - Rainfall totals could exceed **200–250 mm** in some regions, particularly the **northern provinces** and **hilly areas**, increasing the risk of localized flooding.

Forecast Breakdown for Sri Lanka:

1. **Monday, 25 November 2024:**
 - **Northern and Northwestern Provinces** (e.g., Jaffna, Kilinochchi, Mannar):
 - Heavy rain bands from the depression will move inland, bringing **intense showers** (50–100 mm/day).
 - Strong winds of **40–50 km/h**, with gusts up to **60 km/h**, especially along the northern coasts.
 - **Eastern Province** (e.g., Trincomalee, Batticaloa):
 - Moderate to heavy rainfall (30–70 mm/day), with thunderstorms likely.
 - **Central Hills** (e.g., Nuwara Eliya, Kandy):
 - Light to moderate showers due to spillover effects, with occasional heavy rain on windward slopes.
2. **Tuesday, 26 November 2024:**
 - Rainfall will intensify further as the depression edges closer to the **northwestern coast of Sri Lanka**:
 - **Northern and Northwestern Provinces** could receive rainfall in excess of **100–150 mm/day**.
 - Localized flooding and waterlogging possible in low-lying areas.
 - Winds will strengthen along the **northern coastline**, with gusts reaching **60–70 km/h**.
3. **Wednesday, 27 November 2024:**
 - As the system tracks further westward into the Bay of Bengal, rainfall over **Sri Lanka** is expected to reduce:
 - Residual showers (20–50 mm/day) will linger over the **northern and western provinces**.

Advice and Warnings:

1. **Flood Risks:**
 - Districts like **Jaffna, Kilinochchi, Mannar, and Mullaitivu** should prepare for possible **localized flooding** and waterlogging due to intense rainfall.
 - Areas with poor drainage systems are at the highest risk.

Precautionary Measures for the Public

- **Stay Informed:**
Regularly check local news and weather updates from trusted sources.
- **Limit Travel:**
Avoid non-essential travel, particularly in flood-prone or high-risk areas. Exercise caution if travel is unavoidable.
- **Secure Property:**
Safeguard loose outdoor items to prevent wind damage.
- **Emergency Supplies:**
Stock essential items like food, clean water, medications, and flashlights.
- **Avoid Flooded Areas:**
Do not walk or drive through flooded areas, as water levels and currents can pose life-threatening risks.
- **Evacuate If Advised:**
Follow instructions from local authorities if evacuation is recommended.

Actions for Relevant Authorities:

- **Emergency Services:**
Ensure readiness for rapid deployment in the event of widespread flooding, accidents, or other emergencies. Maintain communication with local weather stations.
- **Transport Agencies:**
Monitor road conditions and advise the public on closures or delays. Pre-position equipment to clear roads in affected areas as necessary.
- **Schools and Institutions:**
Consider contingency plans for possible closures or delays in affected regions. Ensure communication with parents and students.
- **Utility Providers:**
Prepare for potential disruptions in electricity, water, and gas services. Mobilize teams for restoration efforts.
- **Local Government:**
Ensure that all emergency response teams are on standby. Update evacuation plans where necessary and disseminate this advisory widely.
- **Public Awareness Campaigns:**
Use all available communication channels to raise awareness about the impending weather event and ensure that public safety measures are understood and followed.

Additional Information:

For continuous updates, please monitor local news, radio stations, and the Northern Provincial /council website at <https://np.gov.lk/>

Conclusion:

The presents significant risks, and we strongly advise all members of the public and relevant authorities to take necessary precautions. Your safety is of utmost importance, and by remaining vigilant and prepared, we can minimize the impacts of this adverse weather event.

Stay safe and heed all official warnings and advisories.

